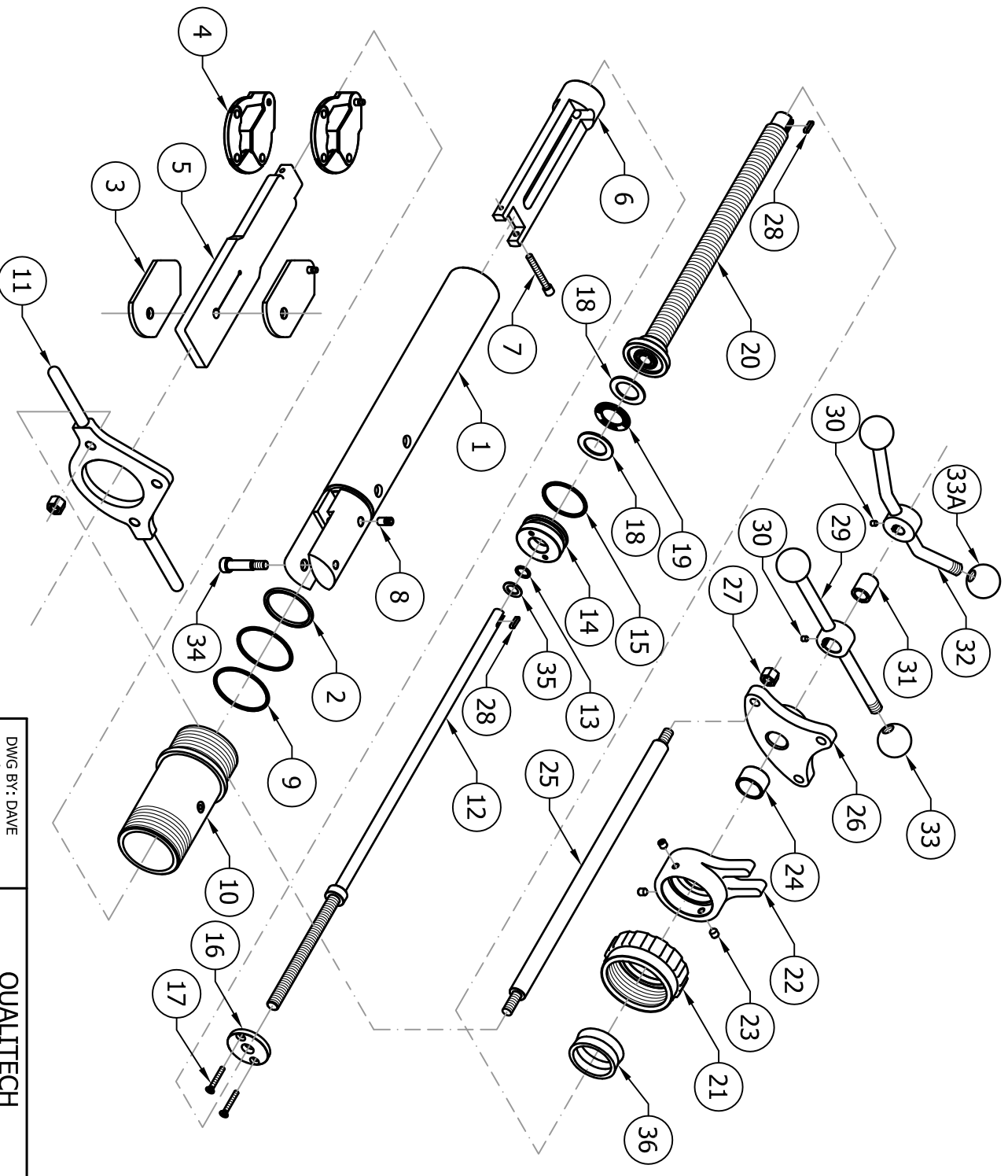


PART #	DESCRIPTION
1	4630130 PLUNGER
2	4010332 332 O-RING
3	4630110 FILLER PLATE (2 REQ'D)
4	4630120 SCISSORS (SET)
5	4220060 RUBBER
6	4630140 RUBBER CARRIER
7	4210440 S.H.C. SCREW
8	4210450 ALLEN NUT (2 REQ'D)
9	4010233 233 O-RING (2 REQ'D)
10	4311140 CONNECTOR SLEEVE
11	4311090 BODY HANDLE
12	4630150 NON-RISING STEM
13	4010114 114 O-RING
14	4311240 STEM RETAINER
15	4010330 330 O-RING
16	4311210 STEM RETAINER PLATE
17	4210460 F.H. SCREW (2 REQ'D)
18	4230030 THRUST WASHER (2 REQ'D)
19	4230040 THRUST BEARING
20	4630160 LEAD SCREW
21	4311300 PACKING NUT
22	4311310 GUIDE COLLAR
23	4210470 SOCKET SET SCREW (3 REQ'D)
24	4312440 SPACER
25	4311290 TIE ROD (3 REQ'D)
26	4311320 TIE ROD FLANGE
27	4210780 HEX NUT (6 REQ'D)
28	4210070 KEY (2 REQ'D)
29	4630170 LEAD SCREW HANDLE
30	4210300 SOCKET SET SCREW (2 REQ'D)
31	4311250 SPACER
32	4630180 STEM HANDLE
33	4280390 RED KNOB (2 REQ'D)
33A	4280430 BLACK KNOB (2 REQ'D)
34	4210442 S.H.C. SCREW
35	4230050 THRUST WASHER
36	4044010 PACKING, 3/16"



REV C - 03/25/13 - CHANGED #15 PART NUMBER AND DESCRIPTION
 REV B - 03/21/13 - CORRECTED PART 36 CALL-OUT
 REV A - 01/23/12 - ADDED PART 36, 3/16" PACKING

UNITED MACHINE & TOOL 105 INDUSTRIAL DR. MINOOKA, IL. 60447 PROPERTY OF UNITED MACHINE AND TOOL DO NOT DUPLICATE WITHOUT PERMISSION		REV	C
		DWG BY: DAVE CHK'D BY: JB	DATE: 03-29-10
QUALITECH QT-4001 4" STOPPER MACHINE ASSEMBLY		DRAWING #	UMT-10-1010-0
A		PART #	4730040